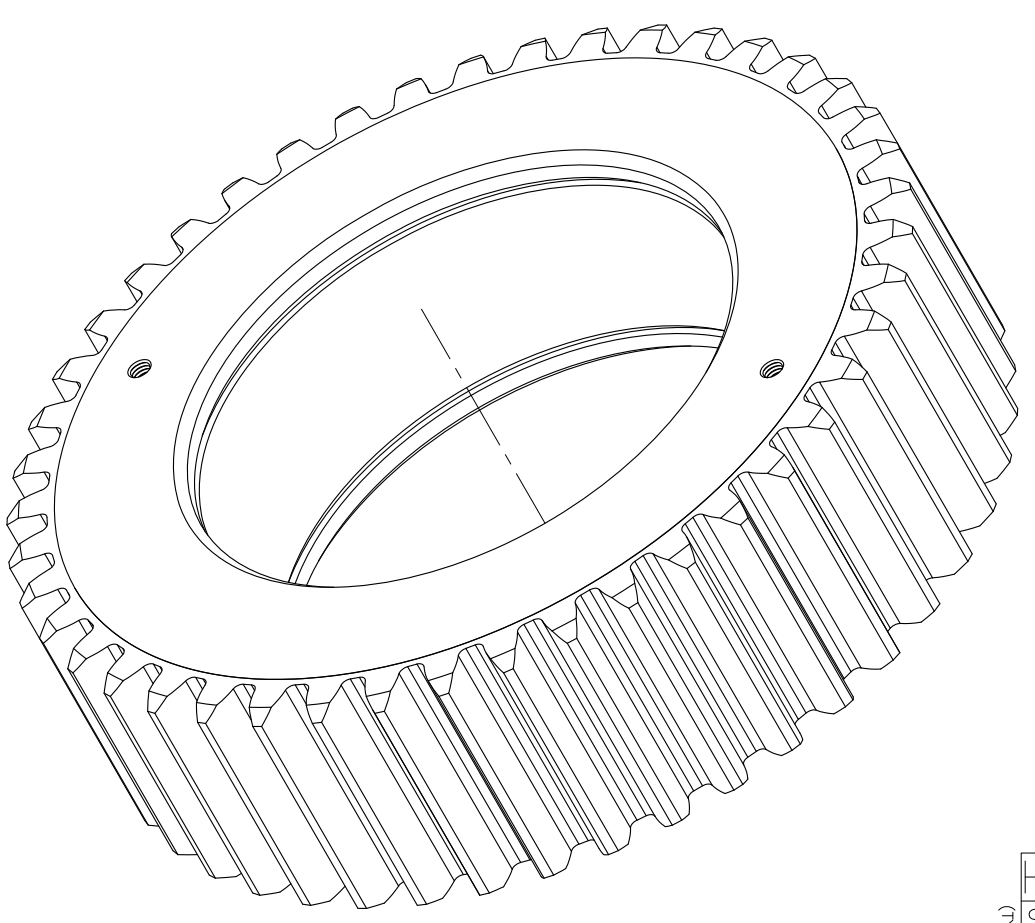
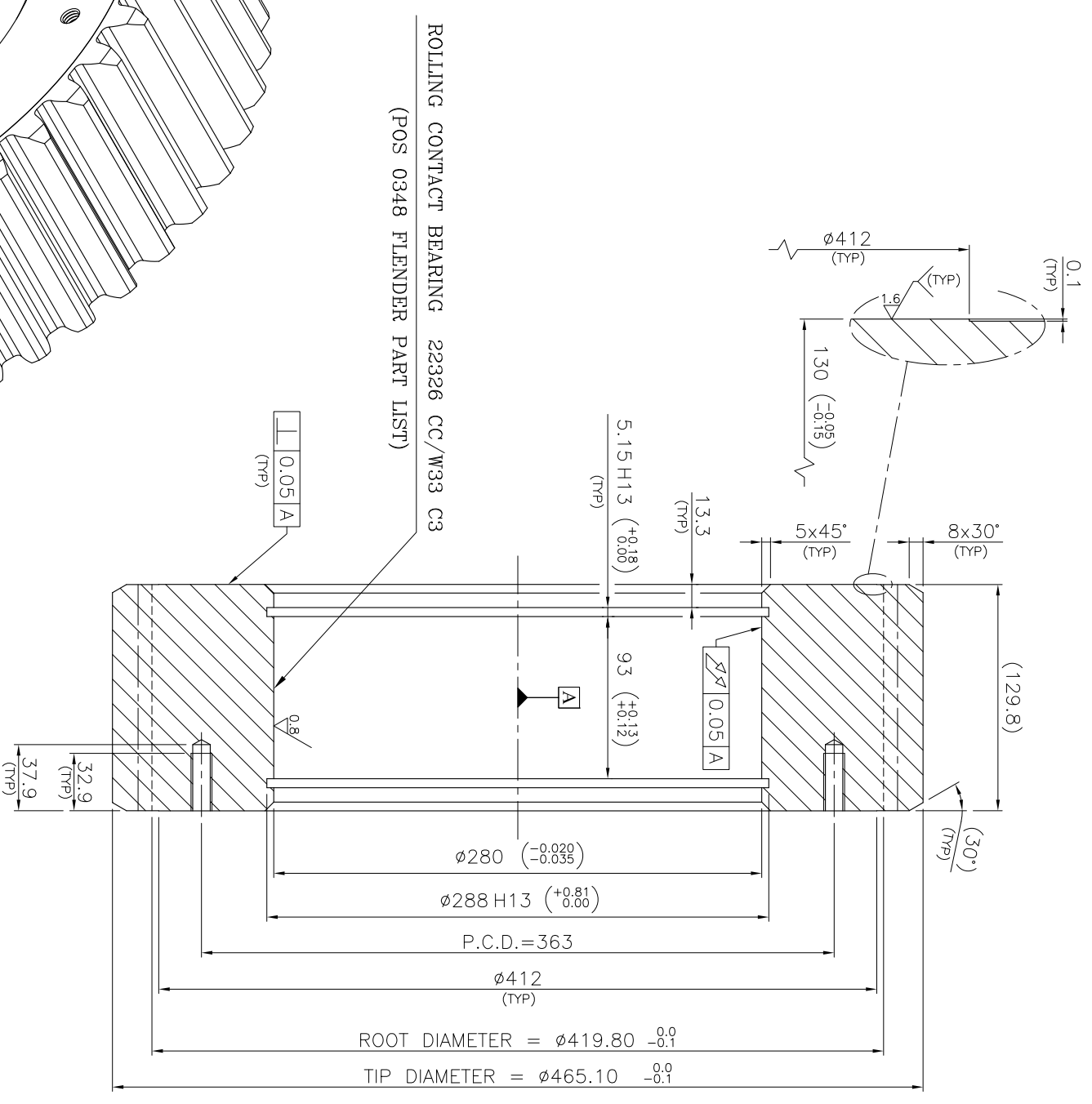


GEAR PARAMETERS

Normal Module (mm)	10
No. of Teeth (Z)	44
Pressure Angle	20°
Helix Angle	0°
Root Diameter	419.80 ^{-0.1}
Tip Diameter	465.10 ^{-0.1}
span size (W5)	141.40 ^{-0.09}
span size (W6)	170.90 ^{-0.04}
Center Distance (Planet to Ring)	307.5
Center Distance (Planet to Sun)	307.5
Gear Quality (AGMA 2000-A88)	Class 6 or Better



ISOMETRIC VIEW



NOTE 3 : DRAWING NO. DUMAN CO. : DS-045-99-000-03.01.00 .
 NOTE 2 : HARDNESS 55±3 HRC .
 NOTE 1 : UNSPECIFIED TOLERANCES TO BE ACCORDING TO DIN 7168 CLASS (M).

SCALE : 1:2.5

DRAWN	99/02/28	DUMAN CO.	TITLE	PLANET PINION	TOLERANCE
CHECKED	99/02/28	DUMAN CO.	QTY : 3	POS 0341 FLENDER PART LIST - STAGE 1	DIN7168(M)
APPROVED	99/02/28	DUMAN CO.	REV	PLEASE REFER TO I.M.C. NO. 889816	WAREHOUSE CODE:
ANG. PROJ.			DRAWING NO. : K.C.C.99-06-006-1	REV DRAWING MATERIAL	WEIGHT
				1.6587	SHEET
					83 Kg
					1 of 3